

# Water Connection Hose 1/2" Nut-1/2" Nut (F/F)

# KAS®

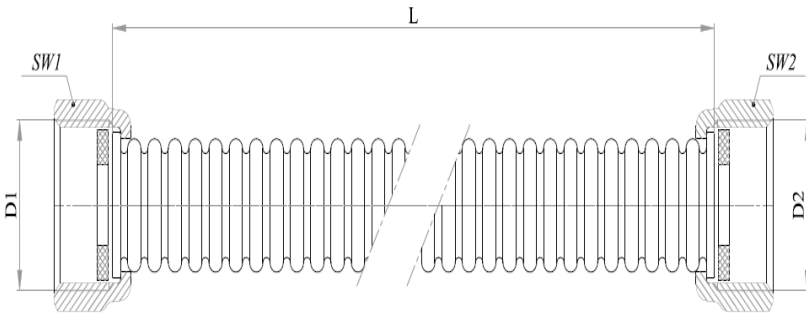


## TECHNICAL DATA SHEET

|                            |  |
|----------------------------|--|
| <b>Product Name</b>        | Water Connection Hose<br>1/2" Nut-1/2" Nut (F/F) |
| <b>Standard</b>            | TS EN 10380                                      |
| <b>Working Temperature</b> | Max. 60°C  |
| <b>Working Pressure</b>    | 0.5 Bar up to 16 Bar                             |
| <b>Intended Use</b>        | Water Connection                                 |

## MATERIAL SPECT

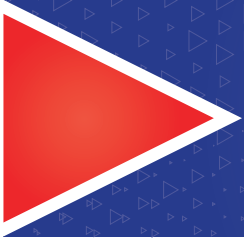
|                        |                       |
|------------------------|-----------------------|
| <b>Corrugated Hose</b> | 304 - L               |
| <b>Nut</b>             | Brass (Nickel Plated) |
| <b>Gasket</b>          | Klinger Gasket        |



Dimensions are in "milimeter"

## PRODUCT

| CODE      | DN | D1(inch) | D2(inch) | SW1(mm) | SW2(mm) | SW3(mm) | L(cm) |
|-----------|----|----------|----------|---------|---------|---------|-------|
| 44.21.010 | 12 | G 1/2"   | G 1/2"   | 24      | 24      | 15      | 10    |
| 44.21.020 | 12 | G 1/2"   | G 1/2"   | 24      | 24      | 15      | 20    |
| 44.21.030 | 12 | G 1/2"   | G 1/2"   | 24      | 24      | 15      | 30    |
| 44.21.040 | 12 | G 1/2"   | G 1/2"   | 24      | 24      | 15      | 40    |
| 44.21.050 | 12 | G 1/2"   | G 1/2"   | 24      | 24      | 15      | 50    |
| 44.21.060 | 12 | G 1/2"   | G 1/2"   | 24      | 24      | 15      | 60    |
| 44.21.70  | 12 | G 1/2"   | G 1/2"   | 24      | 24      | 15      | 70    |
| 44.21.080 | 12 | G 1/2"   | G 1/2"   | 24      | 24      | 15      | 80    |
| 44.21.090 | 12 | G 1/2"   | G 1/2"   | 24      | 24      | 15      | 90    |
| 44.21.100 | 12 | G 1/2"   | G 1/2"   | 24      | 24      | 15      | 100   |
| 44.21.120 | 12 | G 1/2"   | G 1/2"   | 24      | 24      | 15      | 120   |
| 44.21.150 | 12 | G 1/2"   | G 1/2"   | 24      | 24      | 15      | 150   |
| 44.21.200 | 12 | G 1/2"   | G 1/2"   | 24      | 24      | 15      | 200   |



## Water Connection Hose 1/2" Nut-1/2" Nut (F/F)

# KAS®

### Water Connection Hose INSTALLATION and USAGE INSTRUCTION

The following instructions contain information about the installation of the product which is acknowledged in the market as "Water Connection Hose" that is manufactured by Kayalar Pres Döküm San. ve Tic. Ltd. Şti.

- 1- This product is a flex hose assembly dedicated for use in indoors gas burning devices.
- 2- The failure/damage of any single part of the product results in the requirement of complete renewal/change of the product.
- 3- This product consists of a flexible hose, nut and gasket.
- 4- Operating pressure is according to PN10
- 5- This product can be used with Water.
- 6- This product is manufactured in accordance with EN 10380.
- 7- Check the length of the product and the appropriateness of the fittings before installation.
- 8- During the installation, sealing materials that are suitable for water can be used.
- 9- Be sure that a sealing element is readily available in the package.
- 10- Be sure that the sealing element is intact and has no deformation or damage on it.
- 11- Via testing, be sure that there is no gas leakage after the product is installed in place.
- 12- If the sealing element is not intact, meaning damaged, deformed etc., change it with new.
- 13- Hose assembly **MUST** be installed without any twisting, and within a free and reachable place.