

3/4" M - 3/4" M Nipple

KAS®



TECHNICAL DATA SHEET

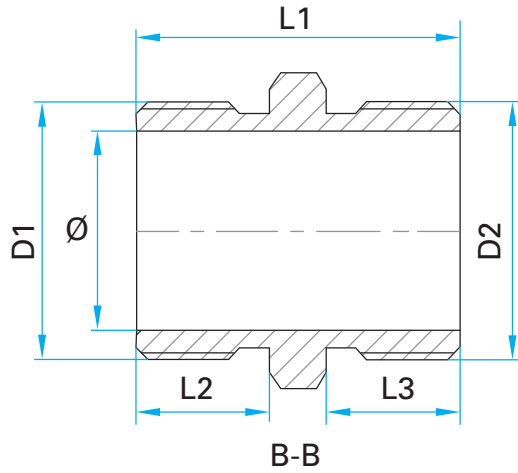
Product Name	3/4" M - 3/4" M Nipple
Intended Use	Installation Systems

MATERIAL

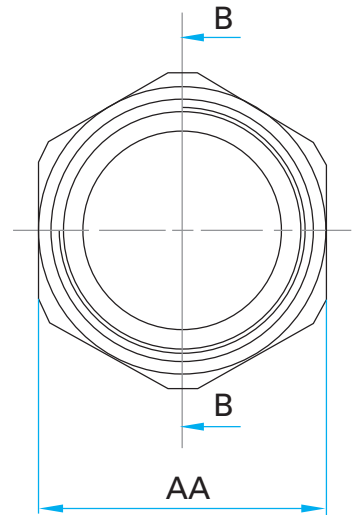
BRASS(CW617N)/(CW614N)

DIMENSIONS

Code	02.02.202
D1 (thread)	G 3/4"
D2 (thread)	G 3/4"
Ø	19,8
L1	32,5
L2	13,5
L3	13,5
AA	29



Dimensions are in "milimeter"



INSTALLATION INSTRUCTION

- 1- Make sure there is no damage on the product may occur during transport and shipping. Before assembly do not unpack the product in order to prevent from the external effects.
- 2- Clean all kinds of contaminants before assembly.
- 3- Make sure that the thread is appropriate with the thread of product.
- 4- Install the product with the appropriate tool from the hexagonal form.
- 5- Use enough flax or plumping adhesive.
- 6- Do not paint the product, do not expose the product with abrasive chemicals.