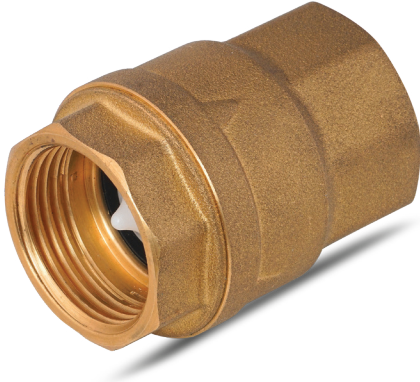


# Vertical Check Valve

# KAS®



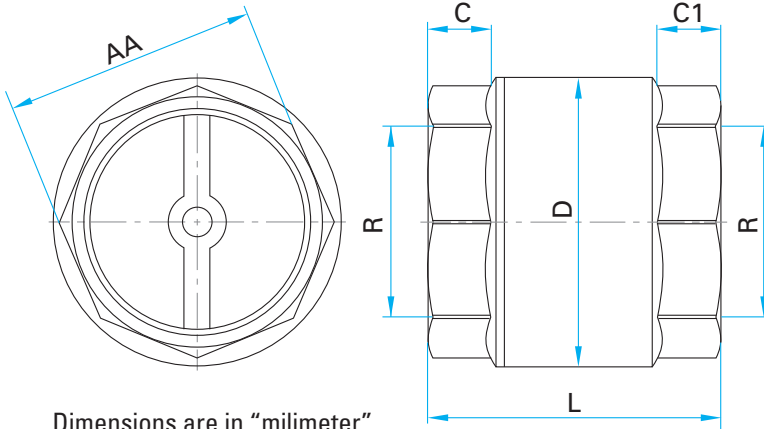
## TECHNICAL DATA SHEET

Product Name	Vertical Check Valve
Standard	TSEK
Working Temperature	-30°C / +90°C
Pressure Class	PN 16
Intended Use	Industrial Application

## MATERIALS

Body	Brass (CW617N)/(CW614N)
Cover	Brass (CW617N)/(CW614N)
Flap	High Strength Plastic
Flap Gasket	NBR / EPDM
Spring	Stainless Steel

µm: Micrometer



Dimensions are in "millimeter"

## DIMENSIONS of 80.81.4....

Code	70	71	72	73	74	75	56	57
DN	15	20	25	32	40	50	65	80
R (thread)	1/2"	3/4"	1"	1 1/4"	1 1/2"	2"	2 1/2"	3"
AA	25	30	38	47	53	66	81,5	93,5
D	34,6	42	45	58,6	66,5	79,4	101	117,4
C	10	12,5	12	17	19	19	18	21,3
C1	10	11,2	12	14,8	17	16	17	21
L	49,5	50,6	59	62,2	68,6	72,6	93	103

## INSTALLATION and OPERATING INSTRUCTION

- 1- Make sure there is no damage on the product may occur during transport and shipping. Before assembly do not unpack the product in order to prevent from the external effects.
- 2- Clean all kinds of contaminants before assembly.
- 3- Make sure that the thread length to be connected to the valve is not too short or too long than the thread length of the valve.
- 4- Install the valve with the appropriate tool from the side where you'll mount it.
- 5- Use enough flax or plumping adhesive.
- 6- Do not paint the valve, do not expose the valve with abrasive chemicals,
- 7- While installation, pay attention to **arrow direction**.