

Rubber Insulated Fancoil Water Connection Hoses

KAS®



TECHNICAL DATA SHEET

Product Name	Rubber Insulated Fancoil Water Connection Hoses 3/4"Nut-DN16 Flex-3/4"Nipple
---------------------	---

KAS CORRUGATED METAL HOSE

Standart	EN ISO 10380
Max. Working Pressure @20°C (PN)-EN ISO 10380	10 Bar
Temperature Range	Min.-270 °C to Max.+600 °C
Intended Use	Industrial Applications

KAS ELASTOMER RUBBER INSULATION

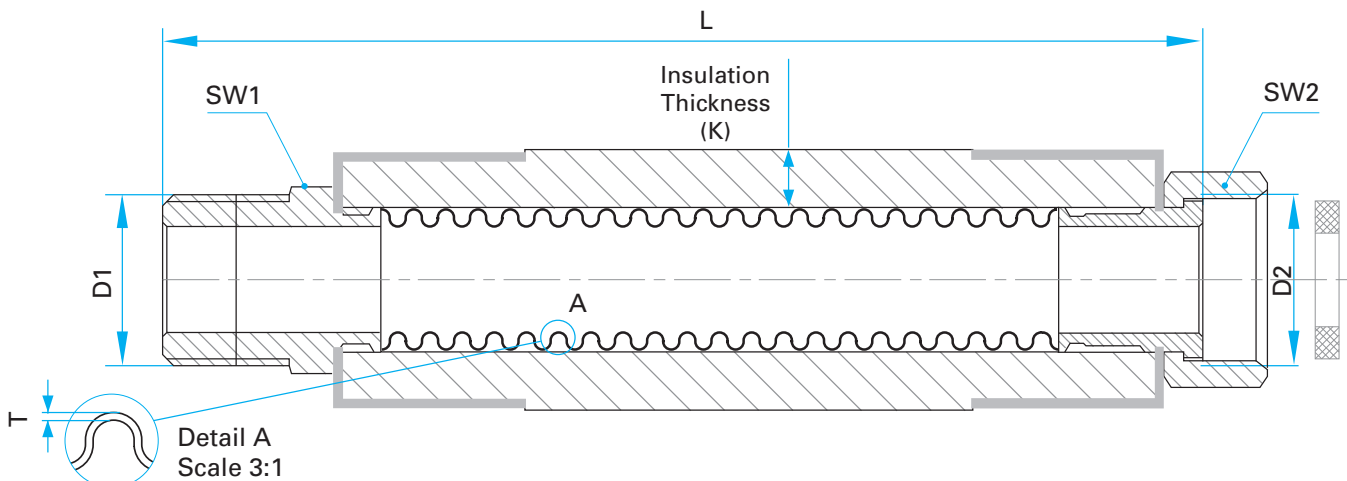
Working Temperature	Min.-40 °C to Max.+120 °C
Standart	EN ISO 10380
Thermal Conductivity λ (30 °C) EN 12667	$\leq 0,034$ W/m.K
Vapour Diffusion Resistance μ EN 12086	>7500
Fireproofing	B S3 D0

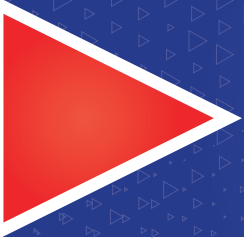
INTENDED USE

- Fan Coil Applications
- Heating, Air Conditioning and Ventilization Applications

DIMENSIONS

Code	DN	D1 (inch)	D2 (inch)	SW1 (mm)	SW2 (mm)	T (mm)	K (mm)	L (cm)
43.20.020	16	Rp 3/4"	G 3/4"	27	30	0,15	9	20
43.20.025	16	Rp 3/4"	G 3/4"	27	30	0,15	9	25
43.20.030	16	Rp 3/4"	G 3/4"	27	30	0,15	9	30
43.20.035	16	Rp 3/4"	G 3/4"	27	30	0,15	9	35
43.20.040	16	Rp 3/4"	G 3/4"	27	30	0,15	9	40
43.20.050	16	Rp 3/4"	G 3/4"	27	30	0,15	9	50
43.20.060	16	Rp 3/4"	G 3/4"	27	30	0,15	9	60
43.20.070	16	Rp 3/4"	G 3/4"	27	30	0,15	9	70
43.20.080	16	Rp 3/4"	G 3/4"	27	30	0,15	9	80





Rubber Insulated Fancoil Water Connection Hoses

KAS®

INSTALLATION and USAGE INSTRUCTION

The following information contains information about assembly on **"RUBBER INSULATED FANCOIL WATER CONNECTION HOSES"** that is trading name and is produced by **Kayalar Pres Döküm San. ve Tic. Ltd. Şti. Company.**

- Deterioration or destruction of any part of the hose set requires the replacement of the entire hose set. Changes made to any part of the hose team mean that this team is not in compliance with the standard.
- These products are manufactured according to EN 13800 Standard.
- Check the connection sizes and ports before assembly.
- The sealing element can be used compatibly with system.
- Check that there is a gasket in the product packaging to be used in the mounting of the union (inner threaded).
- Before placing the gasket inside the counter, make sure that there is no any deformation on both surfaces (torn, cracked, etc.)
- Verify the seal, after installation of hose set and fittings.
- If the gaskets are deformed, do not use them and replace them with a new gasket.

CONSIDERATIONS

- The hose should be assembled without any torsion during its installation.
- If there is any doubt about the suitability of the connection parts and the connection parts in the device, the hose kit should not be installed.
- The installation instructions of the hose kit manufacturer, including instructions on the location and arrangement of the port, as well as the instructions of the device manufacturer, must be followed.

Installation of the products must only be carried out by authorized personnel

MATERIALS	
Corrugated Hose	Stainless Steel Acc. to EN 10028-7
Nipple	Ni coated Carbon Steel St. 37.2
Tube	Ni coated Carbon Steel St. 37.2
Nut	Ni coated Carbon Steel St. 37.2
Gasket	BA-203
Insulation	Elastomer Rub
Cover	I20 Plastic