

# Water Ball Valve with PPR Connection

# KAS®



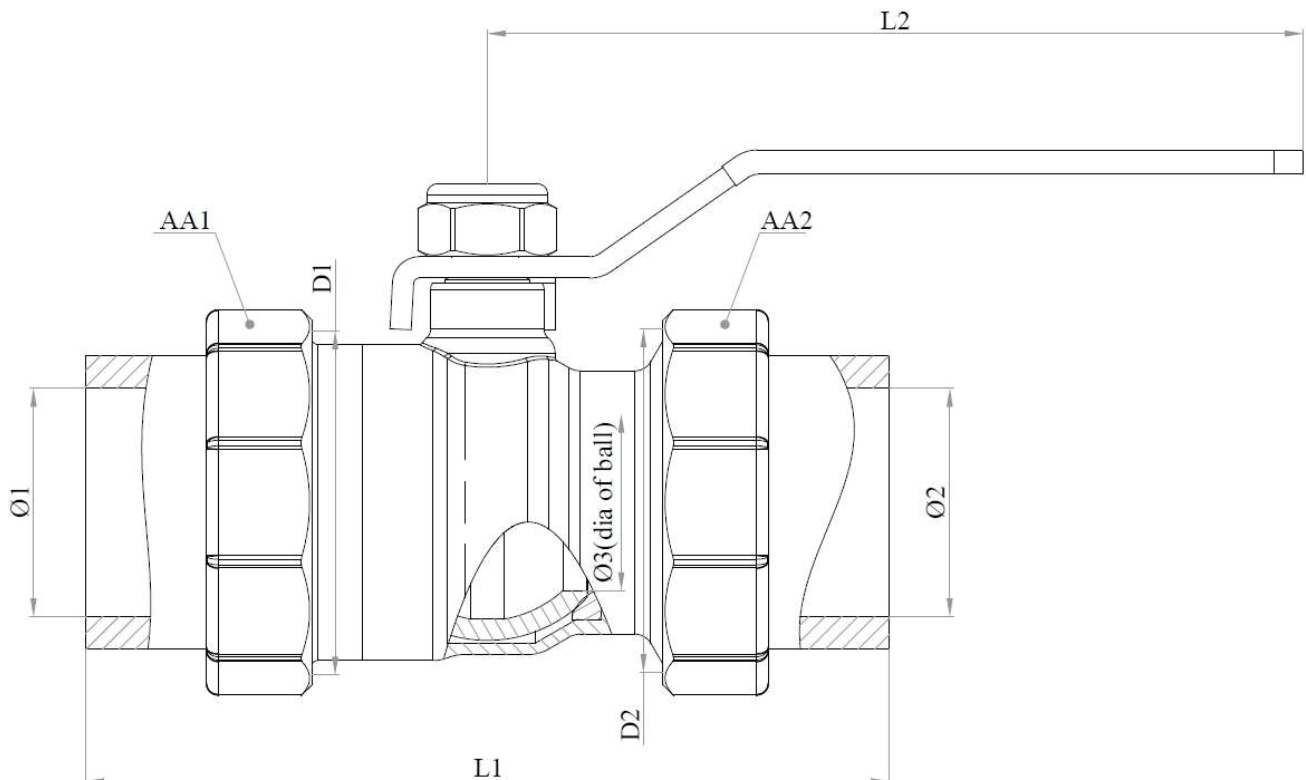
## TECHNICAL DATA SHEET

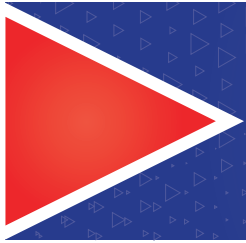
Product Name	Water Ball Valve with PPR Connection
Working Temperature	-10°C to 100°C
Pressure Class	PN 25
Intended Use	Plumbing System

## DIMENSIONS

Code	08.09.732
DN	32
D1 (thread)	1 1/2"
D2 (thread)	1 1/2"
AA1 (mm)	51
AA2 (mm)	51
L1 (mm)	110
L2 (mm)	112
Ø 1	Ø 31,2
Ø 2	Ø 31,2
Ø 3 (dia of ball)	Ø 24

Dimensions are in "milimeter"





# Water Ball Valve with PPR Connection

# KAS®

PART NAME	MATERIAL
Body	Brass (CW617N) / (CW614N)
Cover	Brass (CW617N) / (CW614N)
Ball	Brass (CW617N) / (CW614N)
Ball Seal	PTFE (Teflon)
Union Nut	Brass (CW617N) / (CW614N)
Stem	Brass (CW617N) / (CW614N)
Stem Seal	NBR
Handle	Steel
Pipe Connection	PPR

SURFACES FINISH	
Body	Nickel
Cover	Nickel
Ball	Nickel + Chrome
Handle	Plastic
Union Nut	Nickel

## INSTALLATION and OPERATING INSTRUCTION

- 1- Do not unpack the the valve until installation to prevent falling of any unwanted substance that may affect the working of valve.
- 2- Take measures against any possible damage thay may occur during transport and shipment.
- 3- Clean away every unwanted substance in your system before installation.
- 4- Valve should be off position while installing.
- 5- While installing, grab the valve by the appropriate tool from the across flats where you'll install it.
- 6- During installation do not use excessive adhesive or any unsuitable substance.
- 7- Use the valve fully open or fully closed position.
- 8- Do not paint the valve. Do not expose the valve with abbrasive chemicals.
- 9- Do not use any other tools for opening or closing the valve and do not remove the handle.
- 10- In case of any damage or disorder , valve should be changed by authorities.
- 11- Complying with the installation and usage instruction is compulsory. Otherwise, the product will be out of guarantee.
- 12- Do not forget to get the document of guarantee. This document is valid only with the related bill.